

Adı Soyadı: \_\_\_\_\_

Sınıfı: \_\_\_\_\_

Tarih: \_\_\_\_\_

## Ders 11 / Savunma (Taş almak / Perdelemek)

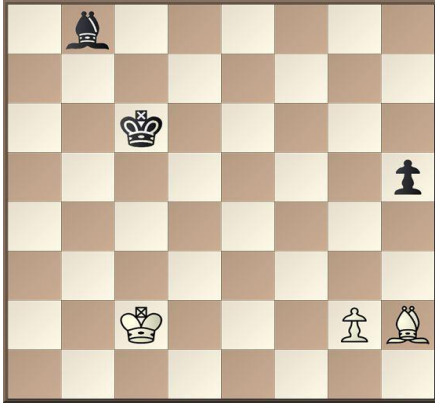
**T**ehlikede olan taşı yuvarlak içine alınız.

**S**avunma hamlesini ok çizerek gösteriniz.

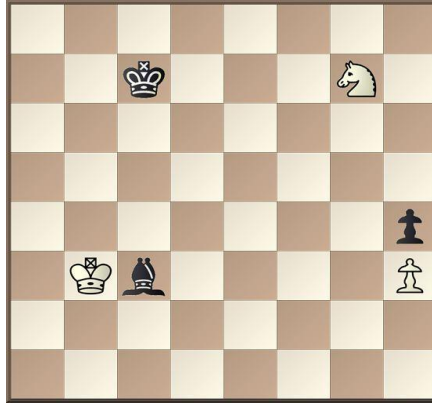
[www.tsf.org.tr/egitim](http://www.tsf.org.tr/egitim) adresinden,  
"Satranç Dersleri" klasörüne girerek konu tekrarını yapabilirsiniz.



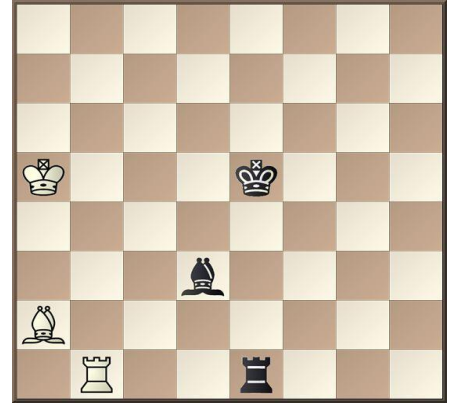
Alıştırma 1



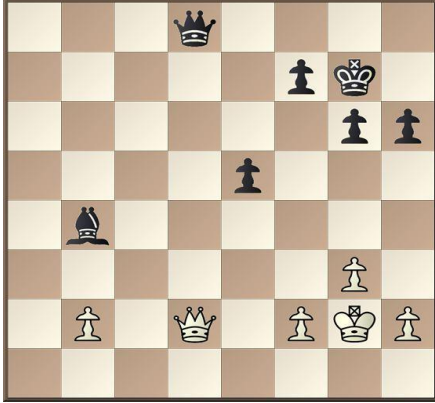
Alıştırma 2



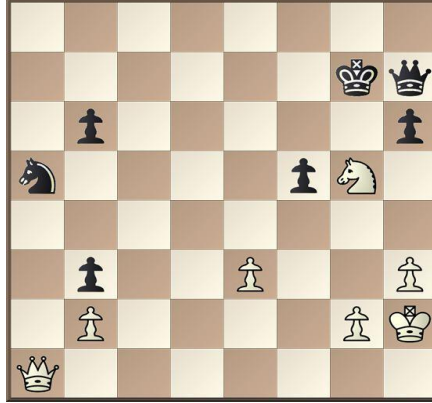
Alıştırma 3



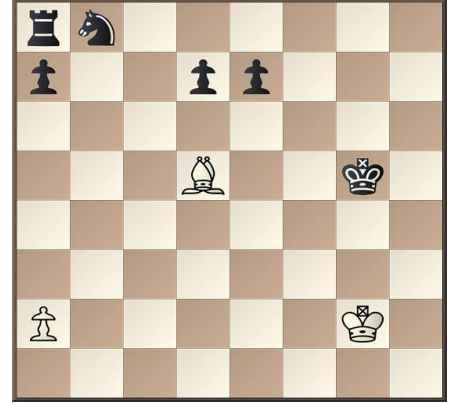
Alıştırma 4



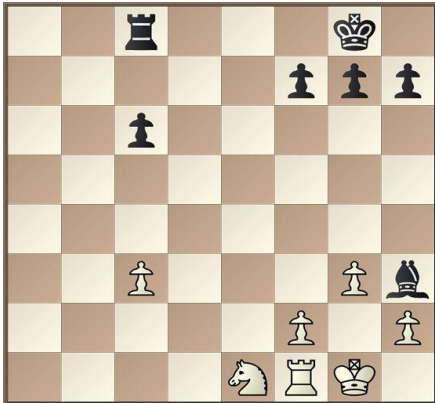
Alıştırma 5



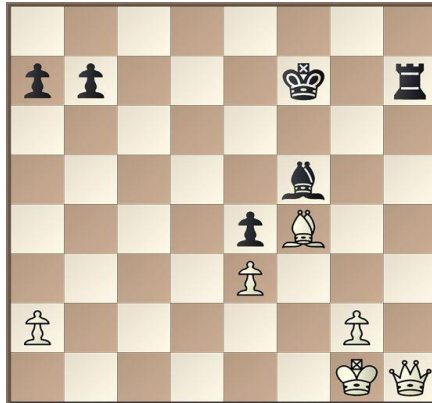
Alıştırma 6



Alıştırma 7



Alıştırma 8



Alıştırma 9

